



SCANSTRUT
Installation Solutions for Marine Electronics™



SCANSTRUT
Installation Solutions for Marine Electronics™



Scanpods



Powerboat Products



Sailboat Products



Accessories



Scanstrut products are available worldwide, for full details contact our head office or go to: **www.scanstrut.com**

All Scanstrut products are supplied with a standard worldwide warranty. Refer to www.scanstrut.com for details.

Scanstrut products are designed with care for their specific function listed in our brochure and on our website. Any Scanstrut product should not be used in an application for which it is not intended.

All design is worldwide copyright of Scanstrut Limited.

Head Office

Scanstrut Limited
1 Malt Mill, Totnes, Devon, UK TQ9 5NH
Tel: +44(0) 1803 863800
Fax: +44(0) 1803 862223
e-mail: mail@scanstrut.com
website: www.scanstrut.com

Designed and produced by zerofour www.zerofour.biz



Scanstrut and PowerTower are registered trade marks of Scanstrut Ltd. All other product names are trademarks of their respective owners. Catalogue correct at time of press. Liability for any difference between product and catalogue cannot be accepted by Scanstrut Ltd.

Yacht and Powerboat photography by kind permission of Hallberg-Rassy; Fairline Boats; Sealine; Najad; Grady-White Boats; Robin Price, Fujifilm. All other photography by Scanstrut Ltd and Chris Knox Photography.

Product Guide 2009
sail&power



New Range of Instrument Mountings

Our exciting new range of instrument pods takes a fresh look at the challenge of installing chart plotters, radar displays, instruments and autopilot controls onto yachts and powerboats.

- Models grouped into logical size options – up to 8" displays; 10" & 12" displays; 15" displays.
- Two case depths – shallow & deep – compact mounting of displays.
- Simplified range – easy product selection.
- Choice of colours – new silver or traditional white.
- Designed to mount instruments from all key brands of marine electronics.
- Complete fitting kit – seals, drills, stainless fastenings etc.



TECHNICAL SPECIFICATIONS – SEE PAGES 34-41

new Helm Pods

Install chart plotter, radar displays, instruments and autopilot controls onto your sailboat. Universal fit for 9.5" and 12" centre pedestals and a simplified range makes product selection easy.

- Compact styling – takes up less space at helm.
- Supplied uncut to fit any display.
- Supplied with complete fitting kit – seals, drills, stainless fastenings etc.
- Compatible with Scanpod Flex-Mount System (see page 5) – more choice of display position.



Scanpod part numbers:

Display size	'Shallow' back	'Deep' back
Up to 8"	SPH-8S	SPH-8D
10" & 12"	SPH-12S	SPH-12D
15"	SPH-15S	SPH-15D
Display size	2 x std instruments	4 x std instruments
Standard navigational instruments & autopilots	SPH-2I	SPH-4I

* When ordering please specify **S** for Silver or **W** for White i.e. SPH-8S-**S**

Please note, 'shallow' back pods will fit:
Simrad NX40 and NX45
Northstar M Series
Simrad GB40 10" [DI10] fits SPH-8S
All other displays fit deep back pods.

TECHNICAL SPECIFICATIONS – SEE PAGES 34-41



new Mast Pods

Install standard or larger 20/20 maxi style instruments at the mast for a clear view. Universal mount system fits a wide range of mast sizes.

- Options for standard and large instruments – standard navigational instruments and 20/20 maxi style displays.
- Choice of carbon and ABS models – lightweight and cost effective options.
- Supplied uncut to fit any electronics.
- Supplied with complete fitting kit – seals, drills, stainless fastenings etc.

Three models available:

Carbon	3 place	- to fit up to 3 x maxi or 20/20 instruments
ABS	2 place	- to fit 2 x standard nav instruments
ABS	4 place	- to fit 4 x standard nav instruments

Innovative watertight enclosure – full protection for your valuable instruments



Choice of colour for ABS models – new silver or traditional white

Universal mounting system fits to wide range of mast sizes



Scanpod part numbers:

Part no.	Carbon (3 x 'maxi')	ABS (4 x 'std nav. instruments')	ABS (2 x 'std nav. instruments')
	SPM-3MAX	SPM-4I	SPM-2I

TECHNICAL SPECIFICATIONS – SEE PAGES 34-41

new Deck Pods

A range of universal pods to install displays onto your powerboat, commercial vessel, RIB or sailboat wheelhouse. Easily mounted on any surface, flat or sloping.

- Two case depths - shallow & deep - compact mounting of displays.
- Choice of colours - new silver or traditional white.

Innovative watertight seal system – full instrument protection



Swivel base – provides level mount on any slope up to 30°

Models to fit up to 8", 10" and 12" displays

Scanpod part numbers:

Display size	'Shallow' back	'Deep' back
Up to 8"	SPD-8S	SPD-8D
10" & 12"	SPD-12S	SPD-12D

* When ordering please specify **S** for Silver or **W** for White i.e. SPD-8S-S

Please note, 'shallow' back pods will fit:
Simrad NX40 and NX45
Northstar M Series
Simrad GB40 10" [D110] fits SPD-8S

All other displays fit 'deep' pods.

TECHNICAL SPECIFICATIONS – SEE PAGES 34-41

new Flex-Mount System

To complement our new Scanpod range we're pleased to introduce our Flex-Mount System. This modular range adds to our Scanpod models and provides additional functions such as a swivel rail top mounting for even greater screen viewing. Look out for more useful options added to the Flex-Mount range during 2009.

Rail Mount

Use with Scanstrut Helm Pod models on low rails, powerboat consoles, twin helm yachts etc.

- Allows display to be viewed from any angle.
- Fits range of rail sizes.

Tilt display forward / back for better viewing

Compatible with Scanstrut Helm Pod models only



Rotate for 360° instrument viewing

Scanpod part number:

Rail mount pod	SPFM-RM1
----------------	----------

Self-Levelling Mounts



Sail

Self-Levelling Mounts

Self-Levelling Radar Mounts

For 2kW and 4kW radomes

Ensure your radar stays level with the horizon at all times for optimum antenna performance. As the boat heels, the radar is kept horizontal preventing target loss and providing the best possible radar picture.

Complete range now available:

- Backstay Mounted – positions radar on backstay = uncluttered decks.
- Mast Mounted – mounts radar higher up on mast = maximum horizon.
- Pole Mounted – option to mount both radar & satcom = space saving.

“The Scanstrut Self-Levelling Radar Mount is a great product! It is easy to install for anyone who knows how to use a toolbox. The radar picture shows a remarkable improvement and the mount fits perfectly with the design of any yacht.”

Olaf Schmidt,
Technical Editor of Germany's
No. 1 Sailboat magazine "YACHT".

Hydraulic damping reacts to major changes in heel angle of boat whilst eliminating all minor oscillations

Light weight head unit reduces weight aloft

Passive system, no power required. Sealed system, entirely maintenance free

Compact cradle compatible with all current radomes

All stainless parts are mirror polished, 316 marine grade

All aluminium parts are bead blasted & bright anodised for maximum corrosion protection

tips for installing on split backstay

- Option 1: If backstay split length is over 2.7m (8'10") above the deck, install the mounting pole and head unit parallel to lower backstay.
- Option 2: If backstay split length is less than 2.7m (8'10") above the deck, mount system centrally and attach head unit onto the central cable above split. Pole extensions available to raise antenna higher.

Backstay Mounted

- Bespoke 2.6m (8'6") aluminium mounting pole, supplied in 2 lengths with hidden joiner piece.
- High-strength universal base for mounting pole – eliminates loading on backstay.
- Options to mount radome forward or aft of backstay.
- Also suitable for both adjustable and split backstays (see tip on page 18).
- Nylon bushes supplied for backstays 6mm (0.2") up to 14mm (0.6") diameter.

tip

When mounting radome forward of backstay, check clearance between radome and mainsail.

Material
Machined and anodised aluminium pole and head unit.
Marine grade 316 stainless steel cradle and base plate

Weight
8.5 kg
(18.8 lbs)

Footprint
55mm x 43.5mm
(2.2" x 1.51")

Install Time
120 minutes



LMB Head Unit
Simply clamps around backstay.



Deck Fixing
Deck or transom mounting.



LMB-F1
See pages 28-31 for accessories.

new Pole Mounted

- Based on our SC100 Pole Mount (page 22), using an adapter unit that installs and supports the levelling mechanism on to the pole top.
- Supplied with a deck strut and rail stand-off for maximum fore / aft and sideways support.
- Universal adjustable pole base that fits any sloping surface from horizontal all the way to vertical.
- Unique pole extrusion has two cable channels with secure covers to hold cables in place.
- Dual Mount option available - for installing both radar and small satcom antenna (see page 26).

tip

Upgrade your SC100 Pole Mount to self-levelling with our upgrade kit.
Please note, 2.5m (8.4') pole length is required.
Please contact Scanstrut for further information.

Material
Machined and anodised aluminium pole and head unit.
Marine grade 316 stainless steel cradle and base plate

Weight
12.0 kg
(26.4 lbs)

Footprint
Ø 80mm (3.1")

Install Time
120 minutes



LMP Head Unit
Fits to the top of SC100 pole.



LMP-1
Available in 2.5m (8.4') pole length only.



LMP-2
See pages 28-31 for accessories.

Mast Mounts

Sail



Mast Mount



new Satcom Mast Mount

For 40cm and 60cm satcom/tv antenna

New Satcom Mast Mounts provide a new solution for installing larger satcom antennas on the mast, clear of the deck and free from obstructions.

- New mounting foot design for 2009 (see page 21).

Modular top plate for compact mount

Attached to mast by four swivel feet – matches the profile of any mast

Safety wire kit included – independently attaches scanner to mast in case an accident damages the installation.

Waterproof cable grommet included – seals cable entry into mast

Nylon washers for all fastenings – protects paint finish

12 point fixing – highest quality Monel rivets

For 60cm Satcom Mast Mount

Attached to mast by 8 swivel feet – feet double up for additional support for heavier antennas

24 point fixing – highest quality Monel rivets



Material

Marine grade 6082 aluminium/ polyester powder coated for a durable and gloss white finish



Weight

1.8 to 2.9 kg (4.0 to 6.4 lbs)



Install Time

60 minutes

For 30cm satcom antenna (including Fleet 33)

Install smaller satcom antennas (30cm and Fleet 33) on our compact SC16 and SC20 Mast Mounts.

- Please refer to the product selection guide on pages 42 - 44 for compatibility.



SC16 Satcom Mast Mount



SC40
Fits 40cm satcom antennas.



SC60-1
Fits 60cm satcom antennas.



SC60-3
See page 44 for compatibility.

Need to pole mount your satcom antenna?

for smaller satcom/tv antennas:



SC100 Pole Mount

For 30cm, Fleet 33 & 40cm* satcom antennas

Totally universal, SC100 Pole System will fit any boat and in any position.

- See page 22 for further information.

* Please note, when installed with a 40cm satcom antenna, kit is supplied with 2 x 1800mm deck struts for additional support.



for larger satcom/tv antennas:



SC2 Pole Mount

For 30cm, 40cm and 60cm satcom antennas

Available as a deck mounted or through-deck installation*.

- See page 23 for further information.

* Please note, SC2 Pole Mounts are supplied with pole base and top plate as a complete kit. An additional Satcom Antenna Mount may be required for the installation. See pages 42 - 44.



PRODUCT SELECTION – SEE PAGES 42-44



TECHNICAL SPECIFICATIONS – SEE PAGES 34-41



PRODUCT SELECTION – SEE PAGES 42-44



TECHNICAL SPECIFICATIONS – SEE PAGES 34-41

Accessories

Power



Accessories



Dual PowerTower®



Satcom PowerTower®

new Powered Hinge System

Fully powered hinging system for Scanstrut Dual PowerTower® and Satcom PowerTower®.

- Reduces height for passing under bridges and for winter storage.
- Remote operation.
- Low profile mounting.
- Fully watertight installation to IP67.
- Cables run internally via watertight seal.
- Easy to retro-fit to an existing installation.



Part No.	Compatibility
PHS-01	Use with Dual PowerTower® or Satcom PowerTower®



Dual PowerTower®



PowerTower®



Satcom PowerTower®

Gantry Mount

Provides a combination mount for lights and aerials in a single space saving installation. Positions lights and antennas for maximum performance from each application.

- Attach using antenna mounting bolts, no extra fastening required.
- Cables run internally via watertight seal.
- Marine grade 316 stainless steel.

SCI18 – For installation with Stainless and Aluminium PowerTower®

- Combined mounting solution for navigation / search lights, GPS / VHF antennas.
- Pre drilled to fit Perko 100 / 200, Aqua Signal 25 & 40 series lights, Hella 2984 series, Hella NaviLED Pro series.

SCI14 – For installation with Dual PowerTower® and Satcom PowerTower®*

- Allows combined installation of anchor, all round, steaming and aft lights.
- Pre drilled to fit Perko 100 / 200, Aqua Signal 25 & 40 series lights, Hella 2984 series, Hella NaviLED Pro series (using NaviLED 360 surface mount).

* Excluding installations with Fleet 33 & 55 antenna.

Part No.	Compatibility
SCI18	Gantry Mount for Aluminium / Stainless PowerTower®. Only compatible as part of a radome installation
SCI14-40*	Gantry Mount for Dual PowerTower® & Satcom PowerTower® (30cm & 40cm domes). Not compatible with Furuno SC50 or Simrad TV45 / 46
SCI14-60	Gantry Mount for Dual PowerTower® & Satcom PowerTower® (60cm domes)

* SCI14-40 also compatible with Aluminium and Stainless PowerTower®



PowerTower®



Pole Mount



Dual PowerTower®

Light & GPS / VHF Antenna Mounts

Install navigation lights and GPS / VHF antennas above the radar for maximum visibility and performance.

- Pre-drilled for easy retrofit installation.
- Attach using radome mounting bolts – no extra fastenings required.
- Cables run internally via watertight seal.
- Marine grade 316 stainless steel.

Part No.	Compatibility
SCI10	Nav Light Mount – Fits Perko 100 / 200, Aqua Signal 25 & 40 series lights
SCI11	GPS / VHF Antenna Mount (starboard sided mount) – 1" x 14 tpi thread Fits all standard GPS / VHF / Navtex antennas
SCI12	GPS / VHF Antenna Mount (port sided mount) – 1" x 14 tpi thread Fits all standard GPS / VHF / Navtex antennas
SCI13	Integrated Nav Light Mount – Pre-fitted with Hella NaviLED 360° all-round white light and supplied with 2.0m (6'7") of connected cable

Need to raise your light or antenna even higher?

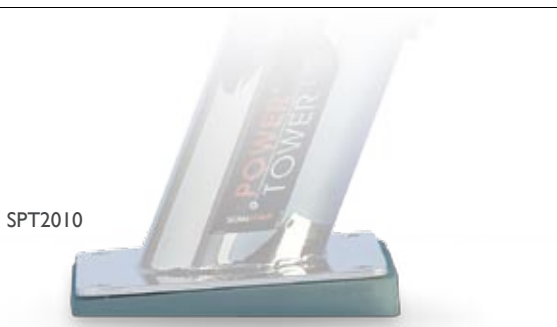
Extender Mounts

Stainless extension mounts for GPS / VHF antennas and Nav Lights.

- Elevates application a further 300mm – 400mm (12" – 16") above our standard mount for maximum performance.

Part No.	Compatibility
EXT-LIGHT	Extender for Nav Lights 400mm (16")
EXT-LED	Extender with Integral LED Nav Light 400mm (16")
EXT-GPS	Extender for GPS & VHF Antennas 300mm (12")

* Please note, light accessory mounts are only compatible as part of a radome installation.
For installation with 30cm satcom (excl. Fleet 33) use EXT-LIGHT / LED Extender Mounts.
GPS / VHF antenna mounts are compatible with 30cm satcom (excl. Fleet 33).



SPT2010



PowerTower®

4° Base Wedge

Angles your radar down 4° below horizontal. Fits under PowerTower® base to provide a level horizon for your radar when the boat is bow's up underway.

- Pre-fitted watertight base seal.
- All mounting holes pre-drilled.

Part No.	Compatibility
PT3010	Use with Composite & Aluminium PowerTower®
SPT2010	Use with Stainless PowerTower®



SCI13

SCI11

SCI11 + SCI10

tip

GPS antennas should ideally be positioned above the radar and never in line with the radar beam.



Satcom Antenna Mount

Adjustable Base Wedge

Satcom antennas require a horizontal mounting surface to function correctly. Finding this on any powerboat is often difficult. Our satcom wedge solves this problem by providing a level surface on slopes from 0° to 12°.

- Simply counter rotate the angled discs until the top surface is horizontal.
- UV stabilised, marine grade polymer in white.

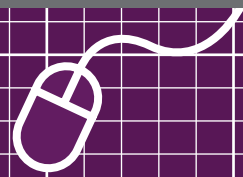
Part No.	Compatibility
SC50	Install with SC35, SC45, SC45R and SC65 only



SC50

Camera Mounts

Custom & OEM



Custom Products

new Camera Mounts

Mast Mount

Compact mast mount for installation of cameras on yacht masts.

Part no. CAM-MM-01
Compatible with:

- FLIR Navigator (Static and Pan / Tilt).
- Raymarine CAM100 (Day and Night Marine camera).

Innovative mounting foot design for 2009 (see page 21)



Safety wire kit included – independently attaches camera to mast in case an accident damages the installation

12 point fixing – highest quality Monel rivets

Attached to mast by 4 swivel feet – universal fit on any mast

Powerboat Mount

Adjustable mount which can be installed on the cabin roof, flybridge and radar arches to provide a level mounting for your camera on any sloping surface.

Part no. CAM-PM-01
Compatible with:

- FLIR Navigator (Static and Pan / Tilt).
- Raymarine CAM100 (Day and Night Marine camera).

Cables run internally through swivel base straight into the deck

Simply counter rotate sections 0 - 30° to provide a level base



Camera can also be angled up or down for perfect viewing



Raymarine Camera on Scanstrut Powerboat Mount



TECHNICAL SPECIFICATIONS – SEE PAGES 34-41

Custom & OEM Projects

Scanstrut is a recognised and respected supplier of custom and standard products to several of the world's best sail and powerboat builders.



Design & Production service for power & sailboat builders.

From a one-off mounting to a custom product range for a new boat model, Scanstrut will provide a complete design and build service for bespoke solutions.

Our experienced designers listen to your needs and develop the right solution to meet your exact installation requirements.

Scanstrut OEM projects have successfully:

- Reduced time & build costs.
- Simplified stock holding.
- Introduced technically superior products.



Custom navlight mast onboard Sealine SC47

Recent Custom & OEM projects

- Sealine – Custom navlight mast supplied with standard Stainless & Dual PowerTower®
- Princess Yachts – Bespoke radar and Nav Light mast for flagship Princess 95MY Motor Yacht
- Fairline Yachts – New range of mounts for the Targa, Phantom and Squadron ranges
- Ampair – Pole Mount System for installation of new Ampair 300 wind turbine
- Fujifilm Class 40 race boat – Waterproof TV camera mounts
- UK Ministry of Defence – Portable radome mounting
- Bradstone Challenger – Custom SC2 pole mount
- Hugo Boss – Custom pole mount
- Superyacht 'Tosca 3' – Mast Mount for 100kg Sea-Tel antenna
- TSS (Vosper Thornycroft) – Digital compass mount for patrol vessel fleet

For more information on this service please contact: tom@scanstrut.com



Camera Mount onboard Class 40 yacht "Fujifilm"